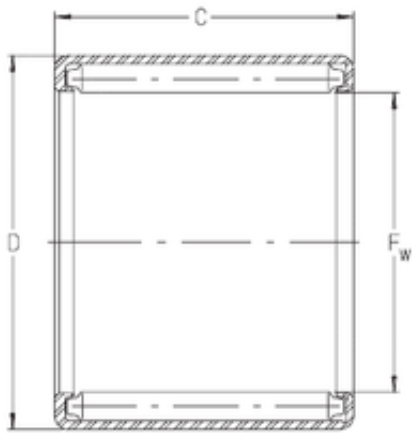




NACHI BEARINGS TRAINING INDUSTRY



INA S1710 needle roller bearings

Bearing No. S1710

Size	26.988x33.338x15.875 mm
Bore Diameter	26,988 mm
Outer Diameter	33,338 mm
Width	15,875 mm
Fw	26,988 mm
D	33,338 mm
C	15,875 mm
Weight	0,028 Kg
Basic dynamic load rating (C)	21,1 kN
Basic static load rating (C0)	44 kN

S1710 Bearing 2D drawings and 3D CAD models