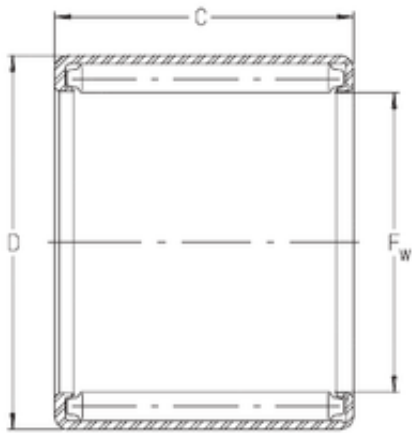




NACHI BEARINGS TRAINING INDUSTRY



INA S2012 needle roller bearings

Bearing No. S2012

Size	31.75x38.1x19.05 mm
Bore Diameter	31,75 mm
Outer Diameter	38,1 mm
Width	19,05 mm
Fw	31,75 mm
D	38,1 mm
C	19,05 mm
Weight	0,039 Kg
Basic dynamic load rating (C)	28 kN
Basic static load rating (C0)	66 kN

S2012 Bearing 2D drawings and 3D CAD models