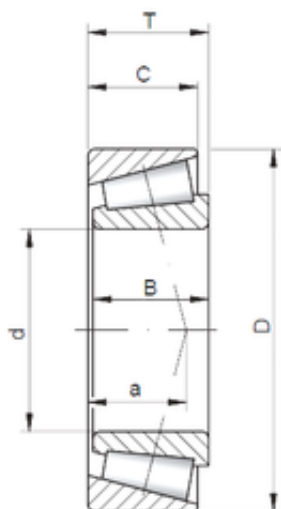




NACHI BEARINGS TRAINING INDUSTRY



82,55 mm x 168,275 mm x 56,363 mm ISO
842/832 tapered roller bearings

Bearing No. 842/832

Size	82.55x168.275x53.975 mm
Bore Diameter	82,55 mm
Outer Diameter	168,275 mm
Width	53,975 mm
d	82,55 mm
D	168,275 mm
T	53,975 mm
B	56,363 mm
C	41,275 mm
a	18,5 mm

842/832 Bearing 2D drawings and 3D CAD models