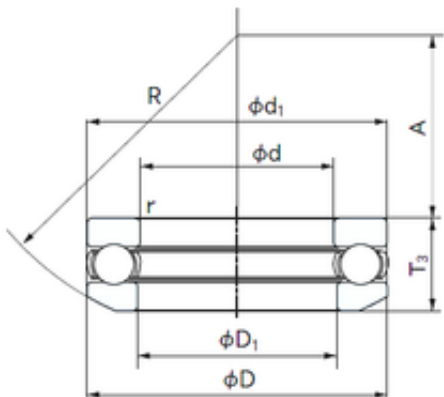




NACHI BEARINGS TRAINING INDUSTRY

NACHI 53309 thrust ball bearings

Bearing No. 53309



53309 Bearing 2D drawings and 3D CAD models

Size	45x85x30.1 mm
Bore Diameter	45 mm
Outer Diameter	85 mm
Width	30.1 mm
d	45 mm
D	85 mm
T	30.1 mm
d1	85 mm
r min.	1 mm
A	25 mm
D1	47 mm
R	64 mm
Weight	0.680 Kg
Basic dynamic load rating (C)	80 kN
Basic static load rating (C0)	163 kN
(Grease) Lubrication Speed	2000 r/min