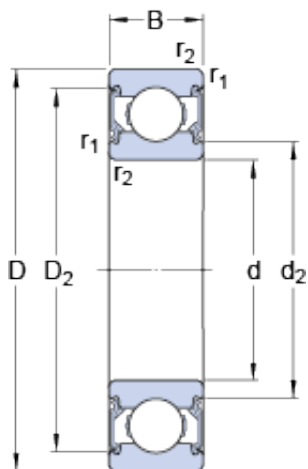




NACHI BEARINGS TRAINING INDUSTRY



17 mm x 47 mm x 14 mm SKF 6303-2RSH deep groove ball bearings

Bearing No. 6303-2RSH

6303-2RSH Bearing 2D drawings and 3D CAD models

Size	47x17x14 mm
Bore Diameter	47 mm
Outer Diameter	17 mm
Width	14 mm
d	17 mm
D	47 mm
B	14 mm
d ₂	23.4 mm
D ₂	39.58 mm
r _{1,2} - min.	1 mm
d _a - min.	22.6 mm
d _a - max.	23.5 mm
D _a - max.	41.4 mm
r _a - max.	1 mm
Basic dynamic load rating - C	14.3 kN
Basic static load rating - C ₀	6.6 kN
Fatigue load limit - P _u	0.275 kN
Limiting speed	11000 r/min
Calculation factor - k _r	0.03
Calculation factor - f ₀	12
Category	Single Row Ball Bearings
Inventory	0.0
Manufacturer Name	SKF
Minimum Buy Quantity	N/A



NACHI BEARINGS TRAINING INDUSTRY

Weight / Kilogram	0.119
Product Group	B00308
Enclosure	2 Seals
Precision Class	ABEC 1 ISO P0
Maximum Capacity / Filling Slot	No
Rolling Element	Ball Bearing
Snap Ring	No
Internal Special Features	No
Cage Material	Steel
Enclosure Type	Contact Seal
Internal Clearance	C0-Medium
Inch - Metric	Metric
Long Description	17MM Bore; 47MM Outside Diameter; 14MM Outer Race Width; 2 Seals; Ball Bearing; ABEC 1 ISO P0; No Filling Slot; No Snap Ring; No Internal Special Features; C0-Medium Internal Clearance; Steel Cage;
Other Features	Deep Groove NBR Seal
Category	Single Row Ball Bearing
UNSPSC	31171504
Harmonized Tariff Code	8482.10.50.68
Noun	Bearing
Keyword String	Ball
Manufacturer URL	http://www.skf.com
Manufacturer Item Number	6303-2RSH
Weight / LBS	0.262
Outside Diameter	1.85 Inch 47 Millimeter
Inner Race Width	0 Inch 0 Millimeter
Outer Race Width	0.551 Inch 14 Millimeter
Bore	0.669 Inch 17 Millimeter



NACHI BEARINGS TRAINING INDUSTRY

bore diameter:	17 mm
static load capacity:	6.55 kN
outside diameter:	47 mm
precision rating:	Not Rated
overall width:	14 mm
finish/coating:	Uncoated
bore type:	Round
cage material:	Steel
closure type:	Double Sealed
outer ring width:	14 mm
row type & fill slot:	Single Row Non-Fill Slot
fillet radius:	1 mm
internal clearance:	C0
maximum rpm:	11000 RPM
operating temperature range:	-40 to +210 ° F
series:	63
dynamic load capacity:	14.3 kN
d_2	23.4 mm
D_2	39.58 mm
$r_{1,2}$ min.	1 mm
d_a min.	22.6 mm
d_a max.	23.5 mm
D_a max.	41.4 mm
r_a max.	1 mm
Basic dynamic load rating C	14.3 kN
Basic static load rating C_0	6.55 kN
Fatigue load limit P_u	0.275 kN
Calculation factor k_r	0.03
Calculation factor f_0	12
Mass bearing	0.12 kg