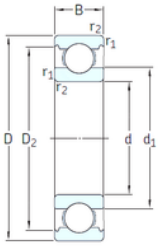




# NACHI BEARINGS TRAINING INDUSTRY



VA201



2Z/VA201



2Z/VA208



2Z/VA228

80 mm x 170 mm x 39 mm SKF 6316-2Z/VA208 deep groove ball bearings

Bearing No. 6316-2Z/VA208

6316-2Z/VA208 Bearing 2D drawings and 3D CAD models

Size	80x170x39 mm
Bore Diameter	80 mm
Outer Diameter	170 mm
Width	39 mm
d	80 mm
D	170 mm
B	39 mm
C	39 mm
d1	108 mm
r1 min.	2,1 mm
r2 min.	2,1 mm
D2	147 mm
Weight	3,65 Kg
Temperature -	150 to +350 °
Basic static load rating (C0)	86,5 kN
Category	Single Row Ball Bearings
Inventory	0.0
Manufacturer Name	SKF
Minimum Buy Quantity	N/A
Weight / Kilogram	3.682
EAN	7316571669687
Product Group	B00308
Enclosure	2 Metal Shields
Precision Class	ABEC 1   ISO P0
Maximum Capacity / Filling Slot	No



## NACHI BEARINGS TRAINING INDUSTRY

Rolling Element	Ball Bearing
Snap Ring	No
Internal Special Features	Segmented Cage
Cage Material	Graphite
Internal Clearance	C0-Medium
Inch - Metric	Metric
Long Description	80MM Bore; 170MM Outside Diameter; 39MM Outer Race Width; 2 Metal Shields; Ball Bearing; ABEC 1   ISO P0; No Filling Slot; No Snap Ring; Segmented Cage Internal Special Features; C0-Medium Internal CI
Other Features	Deep Groove   Extreme Temperature Variant
Category	Single Row Ball Bearing
UNSPSC	31171504
Harmonized Tariff Code	8482.10.50.68
Noun	Bearing
Keyword String	Ball
Manufacturer URL	<a href="http://www.skf.com">http://www.skf.com</a>
Weight / LBS	3.75
Outer Race Width	1.535 Inch   39 Millimeter
Inner Race Width	0 Inch   0 Millimeter
Bore	3.15 Inch   80 Millimeter
Outside Diameter	6.693 Inch   170 Millimeter
$d_1$	108 mm
$D_2$	146.9 mm
$r_{1,2}$ min.	2.1 mm
$d_a$ min.	92 mm
$d_a$ max.	107.9 mm
$D_a$ max.	158 mm
$r_a$ max.	2 mm



## NACHI BEARINGS TRAINING INDUSTRY

Basic dynamic load rating C	130 kN
Basic static load rating $C_0$	86.5 kN
Limiting speed	30 r/min
Limiting temperature T max.	350 ° C
Mass bearing	3.73 kg