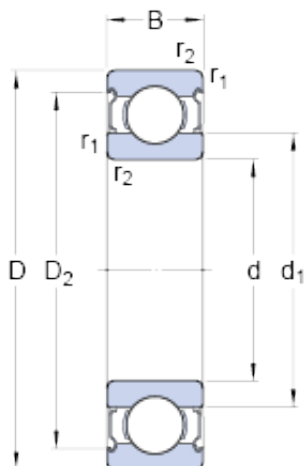




NACHI BEARINGS TRAINING INDUSTRY



100 mm x 215 mm x 47 mm SKF 6320-2Z deep groove ball bearings

Bearing No. 6320-2Z

6320-2Z Bearing 2D drawings and 3D CAD models

Size	215x100x47 mm
Bore Diameter	215 mm
Outer Diameter	100 mm
Width	47 mm
d	100 mm
D	215 mm
B	47 mm
d ₁	135,85 mm
d ₂	mm
D ₂	183,8 mm
r _{1,2} - min.	3 mm
d _a - min.	114 mm
d _a - max.	135,9 mm
D _a - max.	201 mm
r _a - max.	2,5 mm
Basic dynamic load rating - C	174 kN
Basic static load rating - C ₀	140 kN
Fatigue load limit - P _u	4,8 kN
Reference speed	6700 r/min
Limiting speed	3400 r/min
Calculation factor - k _r	0,03
Calculation factor - f ₀	13,2
Category	Single Row Ball Bearings
Inventory	0.0



NACHI BEARINGS TRAINING INDUSTRY

Manufacturer Name	SKF
Minimum Buy Quantity	N/A
Weight / Kilogram	7.166
EAN	7316576624742
Product Group	B00308
Enclosure	2 Metal Shields
Precision Class	ABEC 1 ISO P0
Maximum Capacity / Filling Slot	No
Rolling Element	Ball Bearing
Snap Ring	No
Internal Special Features	No
Cage Material	Steel
Internal Clearance	C0-Medium
Inch - Metric	Metric
Long Description	100MM Bore; 215MM Outside Diameter; 47MM Outer Race Width; 2 Metal Shields; Ball Bearing; ABEC 1 ISO P0; No Filling Slot; No Snap Ring; No Internal Special Features; C0-Medium Internal Clearance; St
Other Features	Deep Groove
Category	Single Row Ball Bearing
UNSPSC	31171504
Harmonized Tariff Code	8482.10.50.68
Noun	Bearing
Keyword String	Ball
Manufacturer URL	http://www.skf.com
Manufacturer Item Number	6320-2Z
Weight / LBS	16.0767
Bore	3.937 Inch 100 Millimeter
Inner Race Width	0 Inch 0 Millimeter



NACHI BEARINGS TRAINING INDUSTRY

Outside Diameter	8.465 Inch 215 Millimeter
Outer Race Width	1.85 Inch 47 Millimeter
d_1	135.85 mm
D_2	183.8 mm
$r_{1,2}$ min.	3 mm
d_a min.	114 mm
d_a max.	135.9 mm
D_a max.	201 mm
r_a max.	2.5 mm
Basic dynamic load rating C	174 kN
Basic static load rating C_0	140 kN
Fatigue load limit P_u	4.75 kN
Calculation factor k_r	0.03
Calculation factor f_0	13.2
Mass bearing	7.3 kg